

Modular Fuseblocks

0-1250 Volts, 700 Amps

BH-3 Series



- Catalog Symbol:** BH-3 Series
- Base:** Light weight, high temperature thermoplastic
- Mounting Studs:** Plated steel
- Connector:** Tin-plated aluminum. Standard connector accepts #6 - 250MCM copper wire
- Nut:** Plated steel
- Washer:** Spring steel
- Agency Approvals:**

U.L. Recognized, Guide IZLT2, File E14853
up to 700 Volts

CSA Certified, Class 6225-01, File 47235
up to 700 Volts

Withstand Rating: 200,000A RMS Sym.
or interrupting rating of fuse used, whichever is smaller.

Temperature Rating (RTI): 140°C

Catalog Code Description:

Block Series

BH - 3 X X X S

Agency Approval

- 0 No Agency Approval
- 1 U.L. Recognition and CSA Certification
- 2 U.L. Recognition Only
- 3 CSA Certification Only

Wire Connector

- 0 No Connector
- 3 2 Hole for #6 - 250MCM Copper Wire (for use with Bases 1, 2, & 3)
- 4 2 Hole for #4 - 500MCM Copper Wire (for use with Base 3) - See Note 1 below

Optional Control Wire Screw

Stud Size

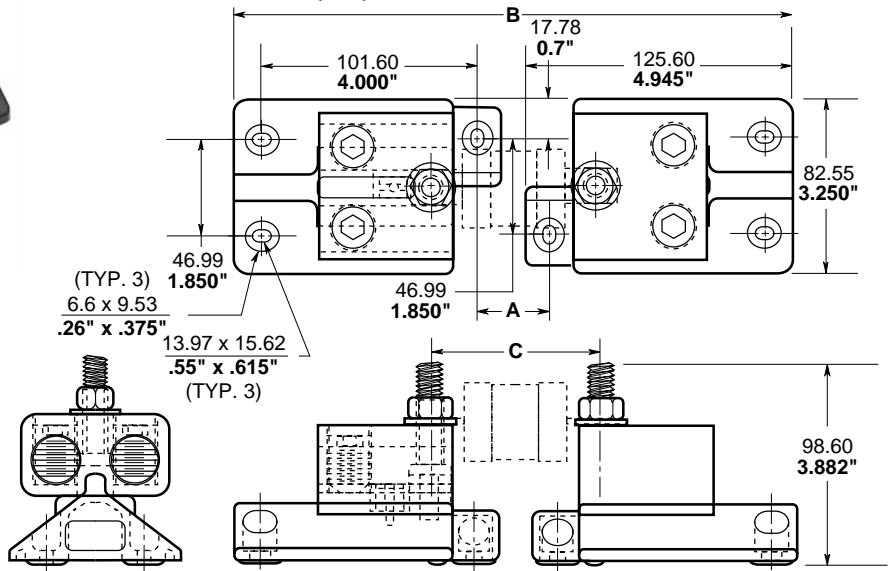
- 3/8 - 16L
- 4 7/16 - 14L
- 5/8 - 16L

- NOTES:**
1. The #4 connector must be used with either the 7/16 - 14 or the 3/8 - 16L stud.
 2. The only compatible connector for the 7/16 - 14 stud is #4.
 3. Always check applicable end use standards for required spacing between blocks, fuses or other hardware.
 4. For applications above 700V, consult appropriate electrical standard for proper creepage distances, clearance distances and insulator.

CE logo denotes compliance with European Union Low Voltage Directive (50-1000 Vac, 75-1500 Vdc). Refer to BIF document #8002 or contact Bussmann Application Engineering at 314-527-1270 for more information.

Dimensional Data

mm (± .25)
Inches (± .01)



Modular Fuseblocks

0-1250 Volts, 700 Amps

BH-3 Series

Electrical Characteristics

Buss Cat. No.	Fuseblock Part No.	Stud Ref.	Fuse Volt Rating	Dimensions mm / Inches		
				"A"	"B"	"C"
FBP 250-400	BH-3144	7/16	700V	59.46 / 2.341	288.06 / 11.341	102.39 / 4.031
FBP 450-600	BH-3144	7/16	700V	65.02 / 2.56	293.62 / 11.56	107.95 / 4.25
FWA 450-600	BH-3145	3/8	150V	20.57 / 0.81	249.1 / 9.81	63.50 / 2.50
FWH 450A-600A	BH-3145	3/8	500V	46.74 / 1.84	275.34 / 10.84	89.68 / 3.53
FWP 450A-600A	BH-3144	7/16	700V	102.36 / 4.03	330.96 / 13.03	145.29 / 5.72
FWX 350A-600A	BH-3145	3/8	250V	31.75 / 1.25	260.35 / 10.25	74.68 / 2.94
JJN 450-600	BH-3144	7/16	300V	8.66 / 0.341	237.26 / 9.341	51.59 / 2.031
JJS 450-600	BH-3144	7/16	600V	32.08 / 1.263	260.68 / 10.263	75.01 / 2.953
JKS 225-400	BH-3145	3/8	600V	90.42 / 3.56	319.02 / 12.56	133.35 / 5.25
JKS 450-600	BH-3144	7/16	600V	109.47 / 4.31	338.07 / 13.31	152.40 / 6.00
KAA 450-600	BH-3145	3/8	130V	18.97 / 0.747	247.57 / 9.747	61.90 / 2.437
KAB 450-600	BH-3145	3/8	250V	27.71 / 1.091	256.31 / 10.091	70.64 / 2.781
KAC 225-400	BH-3144	7/16	600V	77.72 / 3.06	306.32 / 12.06	120.65 / 4.75
KAC 425-600	BH-3144	7/16	600V	77.72 / 3.06	306.32 / 3.06	120.65 / 4.75
KAX 450-600	BH-3145	3/8	250V	27.71 / 1.091	256.31 / 10.091	70.64 / 2.781
KBC 450-600	BH-3145	3/8	600V	60.33 / 2.372	288.85 / 11.372	103.17 / 4.062
KBP 450-600	BH-3144	7/16	700V	86.44 / 3.403	315.04 / 12.403	129.36 / 5.093
LPJ 225-400	BH-3145	3/8	600V	90.42 / 3.56	319.02 / 12.56	133.35 / 5.25
LPJ 450-600	BH-3144	7/16	600V	109.47 / 4.31	338.07 / 13.31	152.40 / 6.00
SPJ-5B 200-400	BH-3144	7/16	1000V	82.83 / 3.261	262.15 / 10.321	127.79 / 5.031
SPJ-5E 200-400	BH-3144	7/16	1000V	82.83 / 3.261	262.15 / 10.321	127.79 / 5.031
SPJ-6B 300-600	BH-3144	7/16	1000V	84.86 / 3.341	313.46 / 12.341	127.79 / 5.031
SPJ-6E 300-600	BH-3144	7/16	1000V	84.86 / 3.341	313.46 / 12.341	127.79 / 5.031
SPP-5B 225-600	BH-3144	7/16	700V	61.04 / 2.403	289.64 / 11.403	103.96 / 4.093
SPP-5E 225-600	BH-3144	7/16	700V	61.04 / 2.403	289.64 / 11.403	103.96 / 4.093
SPP-5F 225-600	BH-3144	7/16	700V	82.47 / 3.247	311.07 / 12.247	125.40 / 4.937
SPP-5H 225-600	BH-3144	7/16	700V	82.47 / 3.247	311.07 / 12.247	125.40 / 4.937
SPP-6B 300-600	BH-3144	7/16	700V	61.04 / 2.403	289.64 / 11.403	103.96 / 4.093
SPP-6E 300-600	BH-3144	7/16	700V	61.04 / 2.403	289.64 / 11.403	103.96 / 4.093
SPP-6F 300-600	BH-3144	7/16	700V	82.47 / 3.247	311.07 / 12.247	125.40 / 4.937
SPP-6H 300-600	BH-3144	7/16	700V	82.47 / 3.247	311.07 / 12.247	125.40 / 4.937
SPP-7B 450-600	BH-3144	7/16	700V	62.64 / 2.466	291.24 / 11.466	105.56 / 4.156
SPP-7E 450-600	BH-3144	7/16	700V	62.64 / 2.466	291.24 / 11.466	105.56 / 4.156
SPP-7F 450-600	BH-3144	7/16	700V	81.69 / 3.216	310.29 / 12.216	124.61 / 4.906
SPP-7H 450-600	BH-3144	7/16	700V	81.69 / 3.216	310.29 / 12.216	124.61 / 4.906
170L4702 thru 170L4720	BH-3145	3/8	1000V	67.06 / 2.64	295.66 / 11.642	109.98 / 4.33
170L5195 thru 170L5299	BH-3145	3/8	1000V	65.07 / 2.562	293.67 / 11.562	108.00 / 4.252
170L7295 thru 170L7296	BH-3145	3/8	1000V	65.07 / 2.562	293.67 / 11.562	108.00 / 4.252
170L7635 thru 170L7636	BH-3145	3/8	1000V	65.07 / 2.562	293.67 / 11.562	108.00 / 4.252
170L7697 thru 170L7699	BH-3145	3/8	1000V	65.07 / 2.562	293.67 / 11.562	108.00 / 4.252
170L8124 thru 170L8379	BH-3145	3/8	1000V	65.07 / 2.562	293.67 / 11.562	108.00 / 4.252
170L8423 thru 170L8429	BH-3145	3/8	1000V	65.07 / 2.562	293.67 / 11.562	108.00 / 4.252
170L8684 thru 170L8982	BH-3144	7/16	1000V	72.06 / 2.837	300.66 / 11.837	114.99 / 4.527
170L9300 thru 170L9302	BH-3144	7/16	1000V	72.06 / 2.837	300.66 / 11.837	114.99 / 4.527
170L9306 thru 170L9308	BH-3144	7/16	1000V	72.06 / 2.837	300.66 / 11.837	114.99 / 4.527
170M3020 thru 170M3023	BH-3145	3/8	660V	35.05 / 1.38	263.65 / 10.38	77.98 / 3.07
170M3070 thru 170M3073	BH-3145	3/8	660V	35.05 / 1.38	263.65 / 10.38	77.98 / 3.07
170M3120 thru 170M3123	BH-3145	3/8	660V	35.05 / 1.38	263.65 / 10.38	77.98 / 3.07
170M3170 thru 170M3173	BH-3145	3/8	660V	65.07 / 2.562	293.67 / 11.562	108.00 / 4.252
170M3220 thru 170M3223	BH-3145	3/8	660V	65.07 / 2.562	293.67 / 11.562	108.00 / 4.252
170M3270 thru 170M3273	BH-3145	3/8	660V	65.07 / 2.562	293.67 / 11.562	108.00 / 4.252
170M3320 thru 170M3323	BH-3144	7/16	660V	33.07 / 1.302	261.67 / 10.302	76.00 / 2.992
170M3370 thru 170M3373	BH-3144	7/16	660V	33.07 / 1.302	261.67 / 10.302	76.00 / 2.992



Modular Fuseblocks

0-1250 Volts, 700 Amps

BH-3 Series

Electrical Characteristics (continued)

Buss Cat. No.	Fuseblock Part No.	Stud Ref.	Fuse Volt Rating	Dimensions mm / Inches		
				"A"	"B"	"C"
170M3620 thru 170M3623	BH-3145	$\frac{3}{8}$	660V	42.06 / 1.656	270.66 / 10.656	84.99 / 3.346
170M3670 thru 170M3673	BH-3145	$\frac{3}{8}$	660V	42.06 / 1.656	270.66 / 10.656	84.99 / 3.346
170M3720 thru 170M3723	BH-3145	$\frac{3}{8}$	660V	80.06 / 3.152	308.66 / 12.152	122.99 / 4.842
170M3770 thru 170M3773	BH-3145	$\frac{3}{8}$	660V	80.06 / 3.152	308.66 / 12.152	122.99 / 4.842
170M4008 thru 170M4017	BH-3145	$\frac{3}{8}$	660V	35.05 / 1.38	263.65 / 10.38	77.98 / 3.07
170M4058 thru 170M4067	BH-3145	$\frac{3}{8}$	660V	35.05 / 1.38	263.65 / 10.38	77.98 / 3.07
170M4108 thru 170M4117	BH-3145	$\frac{3}{8}$	660V	35.05 / 1.38	263.65 / 10.38	77.98 / 3.07
170M4138 thru 170M4247	BH-3145	$\frac{3}{8}$	1250V	65.07 / 2.562	293.67 / 11.562	108.00 / 4.252
170M4158 thru 170M4166	BH-3145	$\frac{3}{8}$	660V	65.07 / 2.562	293.67 / 11.562	108.00 / 4.252
170M4167 thru 170M4208	BH-3145	$\frac{3}{8}$	660V	65.07 / 2.562	293.67 / 11.562	108.00 / 4.252
170M4217 thru 170M4247	BH-3145	$\frac{3}{8}$	660V	65.07 / 2.562	293.67 / 11.562	108.00 / 4.252
170M4258 thru 170M4267	BH-3145	$\frac{3}{8}$	660V	65.07 / 2.562	293.67 / 11.562	108.00 / 4.252
170M4308 thru 170M4317	BH-3145	$\frac{3}{8}$	660V	43.08 / 1.696	271.68 / 10.696	86.00 / 3.386
170M4358 thru 170M4367	BH-3145	$\frac{3}{8}$	660V	43.08 / 1.696	271.68 / 10.696	86.00 / 3.386
170M4608 thru 170M4617	BH-3144	$\frac{7}{16}$	660V	61.06 / 2.404	289.66 / 11.404	103.99 / 4.094
170M4658 thru 170M4667	BH-3144	$\frac{7}{16}$	660V	61.06 / 2.404	289.66 / 11.404	103.99 / 4.09
170M4688 thru 170M4697	BH-3144	$\frac{7}{16}$	1250V	84.07 / 3.31	312.67 / 12.31	127.00 / 5.00
170M4708 thru 170M4717	BH-3144	$\frac{7}{16}$	660V	83.06 / 3.27	311.66 / 12.27	125.98 / 4.96
170M4738 thru 170M4747	BH-3144	$\frac{7}{16}$	1250V	84.07 / 3.31	312.67 / 12.31	127.00 / 5.00
170M4758 thru 170M4767	BH-3144	$\frac{3}{8}$	660V	83.06 / 3.27	311.66 / 12.27	125.98 / 4.96
170M5008 thru 170M5013	BH-3145	$\frac{3}{8}$	660V	35.05 / 1.38	263.65 / 10.38	77.98 / 3.07
170M5058 thru 170M5063	BH-3145	$\frac{3}{8}$	660V	35.05 / 1.38	263.65 / 10.38	77.98 / 3.07
170M5108 thru 170M5113	BH-3145	$\frac{3}{8}$	660V	35.05 / 1.38	263.65 / 10.38	77.98 / 3.07
170M5138 thru 170M5147	BH-3145	$\frac{3}{8}$	1250V	65.07 / 0.562	293.67 / 11.562	108.00 / 4.252
170M5158 thru 170M5163	BH-3145	$\frac{3}{8}$	660V	65.07 / 0.562	293.67 / 11.562	108.00 / 4.252
170M5188 thru 170M5197	BH-3145	$\frac{3}{8}$	1250V	65.07 / 0.562	293.67 / 11.562	108.00 / 4.252
170M5208 thru 170M5213	BH-3145	$\frac{3}{8}$	660V	65.07 / 0.562	293.67 / 11.562	108.00 / 4.252
170M5238 thru 170M5247	BH-3145	$\frac{3}{8}$	1250V	65.07 / 0.562	293.67 / 11.562	108.00 / 4.252
170M5258 thru 170M5263	BH-3145	$\frac{3}{8}$	660V	65.07 / 0.562	293.67 / 11.562	108.00 / 4.252
170M5308 thru 170M5313	BH-3145	$\frac{3}{8}$	660V	48.08 / 1.893	276.68 / 10.893	91.01 / 3.583
170M5358 thru 170M5363	BH-3145	$\frac{3}{8}$	660V	48.08 / 1.893	276.68 / 10.893	91.01 / 3.583
170M5608 thru 170M5613	BH-3144	$\frac{7}{16}$	660V	62.08 / 2.444	290.68 / 11.444	105.00 / 4.134
170M5658 thru 170M5663	BH-3144	$\frac{7}{16}$	660V	62.08 / 2.444	290.68 / 11.444	105.00 / 4.134
170M5688 thru 170M5696	BH-3144	$\frac{7}{16}$	1250V	84.07 / 3.31	312.67 / 12.31	127.00 / 5.00
170M5708 thru 170M5713	BH-3144	$\frac{7}{16}$	660V	82.07 / 3.231	310.67 / 12.231	124.99 / 4.921
170M5738 thru 170M5746	BH-3144	$\frac{7}{16}$	1250V	84.07 / 3.31	312.67 / 12.31	127.00 / 5.00
170M5758 thru 170M5763	BH-3144	$\frac{7}{16}$	660V	82.07 / 3.231	310.67 / 12.231	124.99 / 4.921
170M6008 thru 170M6011	BH-3145	$\frac{3}{8}$	660V	35.05 / 1.38	263.65 / 10.38	77.98 / 3.07
170M6058 thru 170M6061	BH-3145	$\frac{3}{8}$	660V	35.05 / 1.38	263.65 / 10.38	77.98 / 3.07
170M6108 thru 170M6111	BH-3145	$\frac{3}{8}$	660V	35.05 / 1.38	263.65 / 10.38	77.98 / 3.07
170M6138 thru 170M6145	BH-3145	$\frac{3}{8}$	1250V	65.07 / 2.562	293.67 / 11.562	108.00 / 4.252
170M6158 thru 170M6161	BH-3145	$\frac{3}{8}$	660V	65.07 / 2.562	293.67 / 11.562	108.00 / 4.252
170M6188 thru 170M6195	BH-3145	$\frac{3}{8}$	1250V	65.07 / 2.562	293.67 / 11.562	108.00 / 4.252
170M6208 thru 170M6211	BH-3145	$\frac{3}{8}$	660V	65.07 / 2.562	293.67 / 11.562	108.00 / 4.252
170M6238 thru 170M6245	BH-3145	$\frac{3}{8}$	1250V	65.07 / 2.562	293.67 / 11.562	108.00 / 4.252
170M6258 thru 170M6261	BH-3145	$\frac{3}{8}$	660V	65.07 / 2.562	293.67 / 11.562	108.00 / 4.252
170M6308 thru 170M6311	BH-3144	$\frac{7}{16}$	660V	48.08 / 1.893	276.68 / 10.893	91.01 / 3.583
170M6358 thru 170M6361	BH-3144	$\frac{7}{16}$	660V	48.08 / 1.893	276.68 / 10.893	91.01 / 3.583

This bulletin is intended to clearly present comprehensive product data and provide technical information that will help the end user with design applications. Bussmann reserves the right, without notice, to change design or construction of any products and to discontinue or limit distribution of any products. Bussmann also reserves the right to change or update, without notice, any technical information contained in this bulletin. Once a product has been selected, it should be tested by the user in all possible applications.