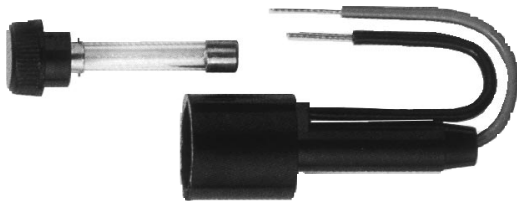


# Specialty Fuse

## Time-Delay, Rejecting Style

# GMQ & HLQ



CATALOG SYMBOL: GMQ (Fuse) HLQ (Fuseholder)  
 TIME-DELAY  
 REJECTION STYLE FUSE  
 1/2 TO 6-1/4 AMPERES  
 300 VOLTS AC OR LESS  
 INTERRUPTING RATING, 10,000 AMPERES  
 FUSE

U.L. LISTED (GUIDE # JDYX, FILE # E19180)  
 CSA CERTIFIED (CLASS 1422-01, FILE # 53787)

FUSEHOLDER

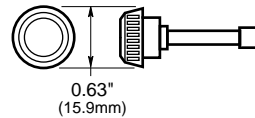
UL Recognized Guide IZLT2, File E14853  
 CSA Certified Class 6225-01, Gile 47235

### Electrical Ratings for Type GMQ Fuses and Rejection Style Carriers

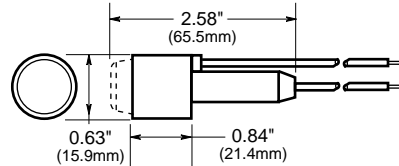
| Fuse       | Carrier    | Fuse       | Carrier    |
|------------|------------|------------|------------|
| GMQ-1/2    | HLQ-1/2    | GMQ-2-1/2  | HLQ-3-2/10 |
| GMQ-6/10   | HLQ-1-6/10 | GMQ-3      | HLQ-3-2/10 |
| GMQ-8/10   | HLQ-1-6/10 | GMQ-3-2/10 | HLQ-3-2/10 |
| GMQ-1      | HLQ-1-6/10 | GMQ-4      | HLQ-5      |
| GMQ-1-1/4  | HLQ-1-6/10 | GMQ-5      | HLQ-5      |
| GMQ-1-6/10 | HLQ-1-6/10 | GMQ-6 1/4  | HLQ-8      |
| GMQ-2      | HLQ-3-2/10 |            |            |

### Dimensional Data

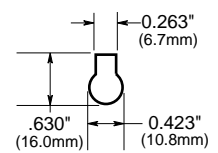
#### FUSE



#### FUSE AND CARRIER



#### MOUNTING HOLE

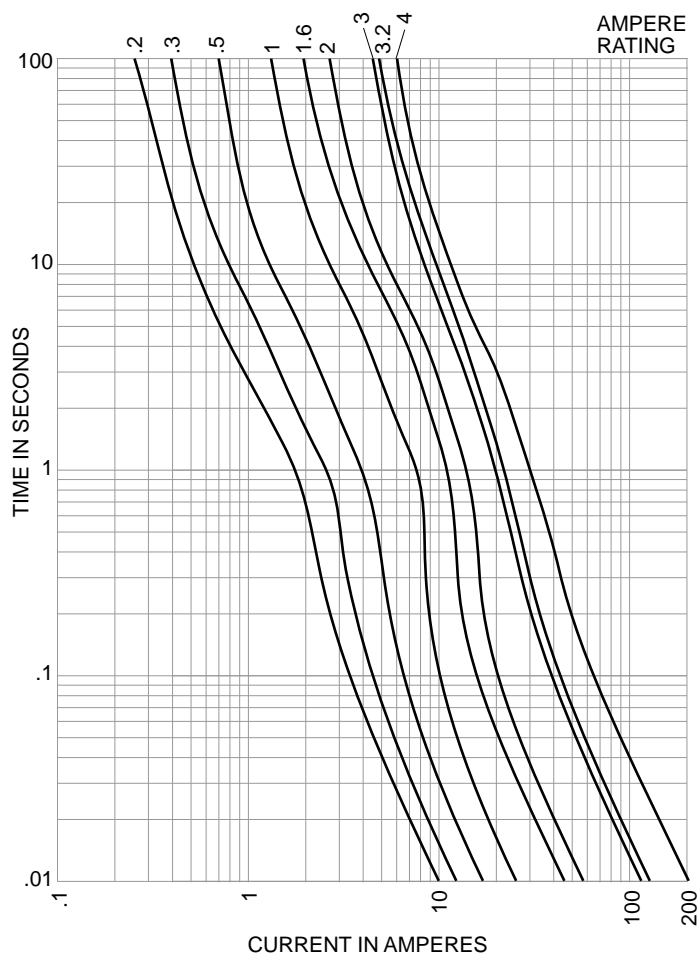


- Fuse and carrier knob are an integral one piece unit.
- Size of type GMQ fuses varies with ampere ratings.
- Mounts in type HLQ size rejection (size limiting) carrier (prevents overfusing).
- HLQ carrier leads are 6" of #18 insulated solid copper wire.
- Units can be panel-mounted when ordered with separate steel, snap-in clip.
- Specify panel mounting clip #6374 for panels 0.043" to 0.062" thick; and clip #4909 for thickness of 0.030" to 0.042". (Clip is inserted into mounting hole and carrier is then pushed into place).
- Caps are attached to the fuse. There are no replacement caps.

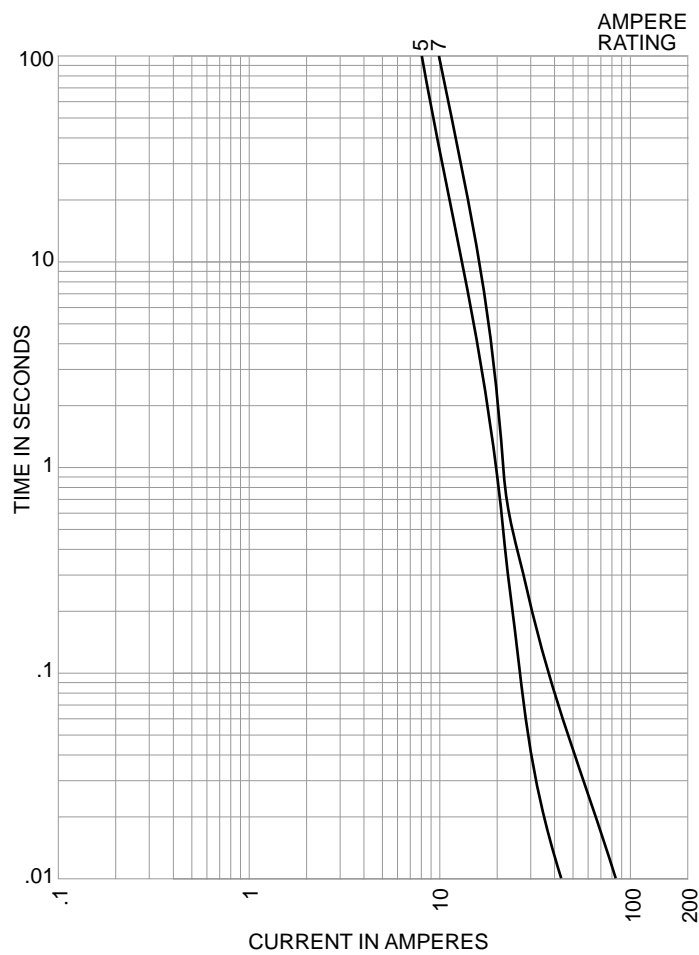
# Specialty Fuse Time-Delay, Rejecting Style

# GMQ & HLQ

Time-Current Characteristic Curves—Average Melt



Time-Current Characteristic Curves—Average Melt



This bulletin is intended to clearly present comprehensive product data and provide technical information that will help the end user with design applications. Bussmann reserves the right, without notice, to change design or construction of any products and to discontinue or limit distribution of any products. Bussmann also reserves the right to change or update, without notice, any technical information contained in this bulletin. Once a product has been selected, it should be tested by the user in all possible applications.