

Fuse Clips for Printed Circuit Boards

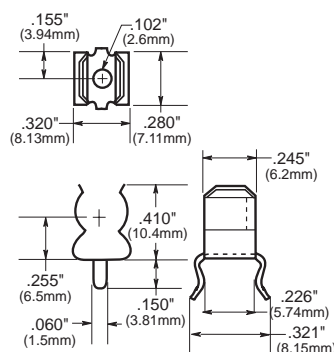
For 1/4" Diameter Fuses

1AXXXX Series

1A4534 SERIES

WITH END STOPS & ANGLED OUT LEADS

Dimensional Data

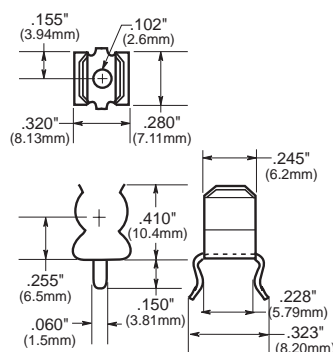


Catalog Number	Clip Mat.*	Finish
1A4534-01	BeCu*	Bright Tin
1A4534-06	Spg. Br.	Bright Tin

1A4533 SERIES

WITHOUT END STOPS & ANGLED OUT LEADS

Dimensional Data

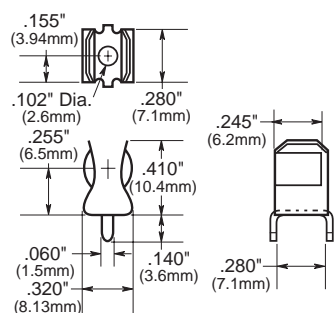


Catalog Number	Clip Mat.*	Finish
1A4533-01	BeCu*	Bright Tin
1A4533-06	Spg. Br.	Bright Tin

1A1907 SERIES

WITH END STOPS & STRAIGHT LEADS

Dimensional Data

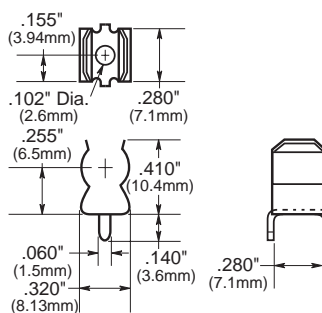


Catalog Number	Clip Mat.*	Finish
1A1907-02	Spg. Br.	None Bright Dipped
1A1907-03	BeCu*	Bright Tin
1A1907-05	BeCu*	Silver
1A1907-06	Spg. Br.	Bright Tin

1A3398 SERIES

WITHOUT END STOPS & STRAIGHT LEADS

Dimensional Data



Catalog Number	Clip Mat.*	Finish
1A3398-07	Spg. Br.	Bright Tin

*Beryllium copper recommended for currents higher than 15 amps (1/4" clips). Spg. Br. - Spring Bronze; BeCu - Beryllium Copper.

Fuse Clips for Printed Circuit Boards

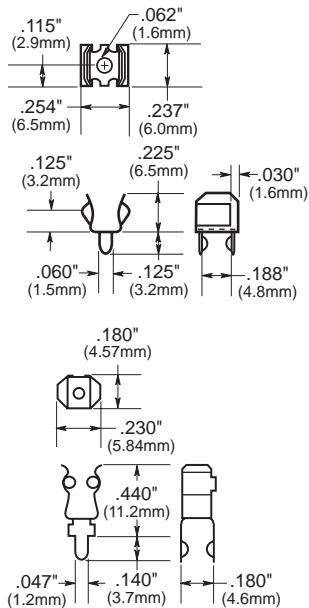
For ATC, 5mm and 13/32" Diameter Fuses

1AXXXX Series

1A3399 and 1A5018 SERIES

FOR 5MM DIAMETER FUSES WITH END STOPS & STRAIGHT LEADS

Dimensional Data



Catalog Number	Clip Mat.*	Finish
1A3399-10	Spg. Br.	Bright Tin
1A3399-01	BeCu*	Silver
1A3399-04	BeCu*	Bright Tin

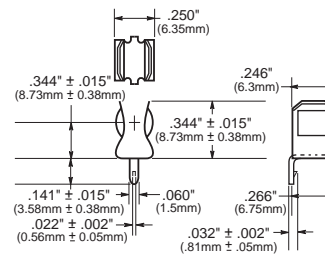
HIGH PROFILE

Catalog Number	Clip Mat.*	Finish
1A5018-10	Spg. Br.	Bright Tin
1A5018-7	Spg. Br.	Silver

1A5601 SERIES

FOR 5MM DIAMETER FUSES (0 - 7 AMPS)

Dimensional Data

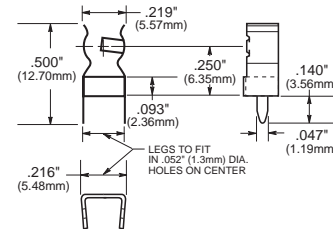


Catalog Number	Clip Mat.	Finish
1A5601	Spg. Br.	Bright Tin

1A5602 SERIES

FOR 5MM DIAMETER FUSES (0 - 7 AMPS)

Dimensional Data

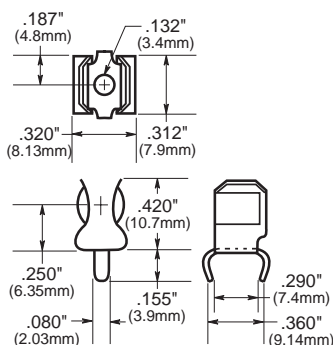


Catalog Number	Clip Mat.	Finish
1A5602	Spg. Br.	Bright Tin

1A1119 SERIES

WITH END STOPS & ANGLED IN LEADS

Dimensional Data

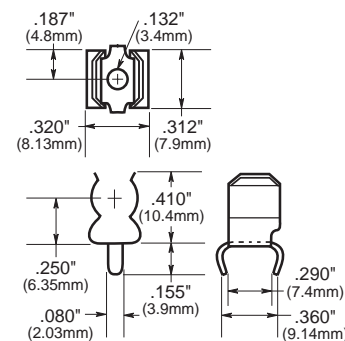


Catalog Number	Clip Mat.*	Finish
1A1119-04	BeCu*	Bright Tin
1A1119-05	BeCu*	Silver
1A1119-10	Spg. Br.	Bright Tin

1A1120 SERIES

WITHOUT END STOPS AND ANGLED IN LEADS

Dimensional Data



Catalog Number	Clip Mat.*	Finish
1A1120-05	BeCu*	Silver
1A1120-06	BeCu*	Bright Tin
1A1120-09	Spg. Br.	Bright Tin

*Beryllium copper recommended for currents higher than 15 amps (1/4" clips). Spg. Br. - Spring Bronze; BeCu - Beryllium Copper.

Fuse Clips for Printed Circuit Boards

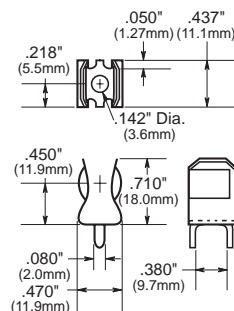
For 1/4" Diameter Fuses

1AXXXX Series

1A3400 SERIES

FOR 13/32" DIAMETER FUSES (20 AMPS MAXIMUM)
WITH END STOPS & STRAIGHT LEADS

Dimensional Data

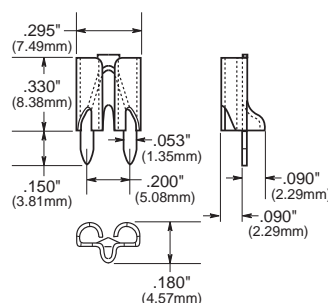


Catalog Number	Clip Mat.	Finish
1A3400-09	Spg. Br.	Bright Tin

1A5600 SERIES

FOR ATC® FUSES (0 - 20 AMPS)

Dimensional Data



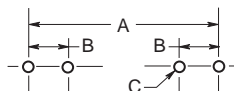
Catalog Number	Clip Mat.	Finish
1A5600	Brass	Satin Finish Tin

*Beryllium copper recommended for currents higher than 15 amps (1/4" clips). Spg. Br. - Spring Bronze; BeCu - Beryllium Copper.

FUSE CLIP CATALOG NUMBERS

Footprint

Dimensional Data



Catalog Number	Dimensions						B Tabs	C (4 holes)	Board Thickness
	7/8" (22.2mm)	1" (25.4mm)	1-1/4" (31.8mm)	1-3/8" (34.93mm)	1-1/2" (38.10mm)	20mm			
1A3398-	1.00" (25.40)	1.125" (28.58)	1.375" (34.920)	—	—	—	.295 - .305" (7.49 - 7.75)	.067" - .070" (1.70 - 1.78)	.093" (2.36)
1A1907-	1.00" (25.40)	1.125" (28.58)	1.375" (34.92)	—	—	—	.295 - .305" (7.49 - 7.75)	.093" ± .002" (2.36 ± .05)	.062 to .125" (1.57 to 3.18)
1A1119-	1.00" (25.40)	1.125" (28.58)	1.375" (34.920)	—	—	—	.295 - .305" (7.49 - 7.75)	.093" ± .002" (2.36 ± .05)	.062" to .125" (1.57 to 3.18)
1A1120-	1.00" (25.40)	1.125" (28.58)	1.375" (34.920)	—	—	—	.295 - .305" (7.49 - 7.75)	.093" ± .002" (2.36 ± .05)	.062" to .125" (1.57 to 3.18)
1A3399-	—	—	—	—	—	.875" (22.23)	.200" (5.08)	.067" - .070" (1.70 - 1.78)	.093" (2.36)
1A3400-	—	—	—	1.50" (38.10)	1.625" (41.28)	—	.405" (10.29)	.091" - .095" (2.31 - 2.41)	.125" (3.18)
1A4533-	1.00" (25.40)	1.125" (28.58)	1.375" (34.920)	—	—	—	.300" (7.62)	.067" - .070" (1.70 - 1.78)	.062" (1.57)
1A4534-	1.00" (25.40)	1.125" (28.58)	1.375" (34.920)	—	—	—	.300" (7.62)	.067" - .070" (1.70 - 1.78)	.062" (1.57)
1A5018-	—	—	—	—	—	.820" ± .015" (20.80 ± .38)	.180" (4.6)	.053" - .002" (1.35 - 0.05)	.093" (2.36)
1A5600-	—	—	—	—	—	—	.200" (5.08)	.052 ± .003 (1.32 ± .077)	.125 max. (3.18)
1A5601-	—	—	—	—	—	.820" ± .015" (20.80 ± .38)	.266" (6.76)	.067" ± .003" (1.70 ± .074)	.062" (1.57)
1A5602-	—	—	—	—	—	—	.220" (5.588)	—	.125 max. (3.175)

This bulletin is intended to clearly present comprehensive product data and provide technical information that will help the end user with design applications. Bussmann reserves the right, without notice, to change design or construction of any products and to discontinue or limit distribution of any products. Bussmann also reserves the right to change or update, without notice, any technical information contained in this bulletin. Once a product has been selected, it should be tested by the user in all possible applications.