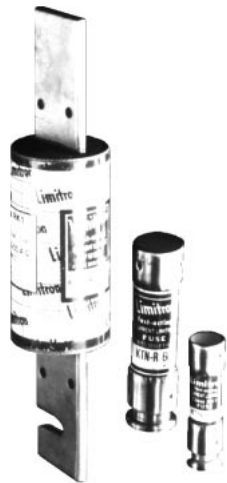


Limitron®
Fast-Acting Fuses
600 Volt

KTS-R
1-600A



Catalog Symbol: KTS-R

Fast-Acting
 Current-Limiting

Ampere Rating: 1 to 600 Amperes

Voltage Rating: 600 Volts AC (or less)*

Interrupting Rating: 200,000A RMS Sym.

Tube Material: Glass Melamine

End Caps: 70/30 Brass

Operating Temp.: -40°C to +85°C

Storage Temp.: -55°C to +85°C

Agency Approvals:

UL Listed, Std. 248-12, Class RK1, Guide JDDZ, File E54273
 CSA Certified, C22.2 No. 248.12, Class 1422-02, File 53787

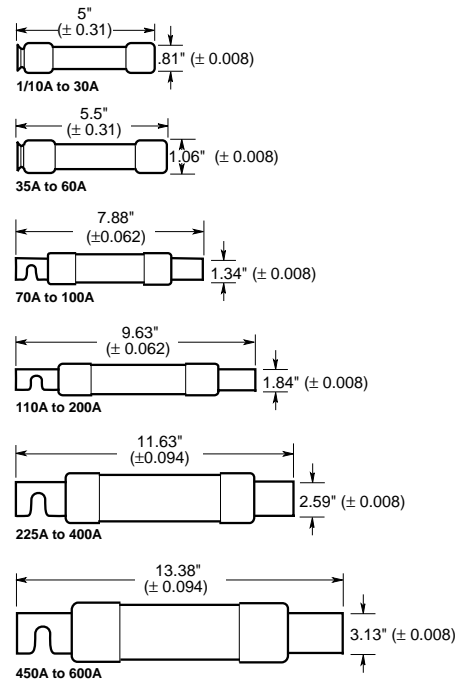
*0-600A is rated 300 VDC and 10 KAIC.

Catalog Numbers

| | | |
|----------|-----------|-----------|
| KTS-R-1 | KTS-R-30 | KTS-R-125 |
| KTS-R-2 | KTS-R-35 | KTS-R-150 |
| KTS-R-3 | KTS-R-40 | KTS-R-175 |
| KTS-R-4 | KTS-R-45 | KTS-R-200 |
| KTS-R-5 | KTS-R-50 | KTS-R-225 |
| KTS-R-6 | KTS-R-60 | KTS-R-250 |
| KTS-R-8 | KTS-R-70 | KTS-R-300 |
| KTS-R-10 | KTS-R-75 | KTS-R-350 |
| KTS-R-12 | KTS-R-80 | KTS-R-400 |
| KTS-R-15 | KTS-R-90 | KTS-R-450 |
| KTS-R-20 | KTS-R-100 | KTS-R-500 |
| KTS-R-25 | KTS-R-110 | KTS-R-600 |

CE logo denotes compliance with European Union Low Voltage Directive (50-1000 VAC, 75-1500 VDC). Refer to BIF document #8002 or contact Bussmann Application Engineering at 314-527-1270 for more information.

Dimensional Data



Carton Quantity and Weight (600 VAC)*

| Amps | Carton Qty. | Weight** | |
|---------|-------------|----------|-------|
| | | Lbs. | Kg. |
| 1-30 | 10 | 1.45 | 0.657 |
| 40-60 | 10 | 2.63 | 1.262 |
| 70-100 | 1 | 0.5 | 0.226 |
| 110-200 | 1 | 1.4 | 0.634 |
| 225-400 | 1 | 2.75 | 1.246 |
| 450-600 | 1 | 4.25 | 1.925 |

*Contact Bussmann for DC ratings.

**Weight per carton.

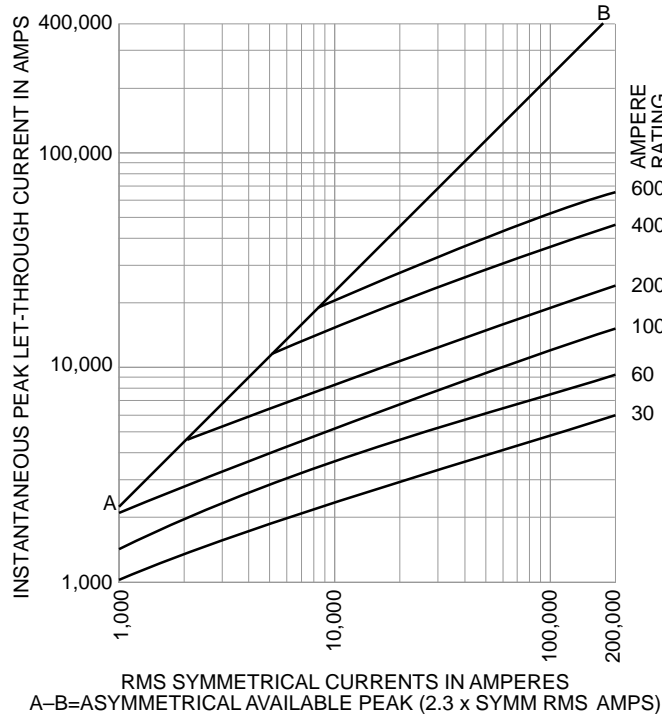
General Information:

- Single-element, fast-acting fuses with minimal time-delay.
- Provides a high degree of short-circuit current-limitation (component protection).
- Particularly suited for circuits and loads with no heavy surge currents of motors, transformers, solenoids, and welders.
- LIMITRON fuses are commonly used to protect circuit breakers with lower interrupting ratings.
- If used in circuits with surge currents (motors, etc.) must be sized to prevent unwanted opening and thus only provide short-circuit protection.
- Incorporate Class R rejection feature. Can be inserted in non-rejection type fuseholders. Thus, can physically and electrically replace fast-acting Class H, K1, K5, RK5, and other fast-acting fuses.

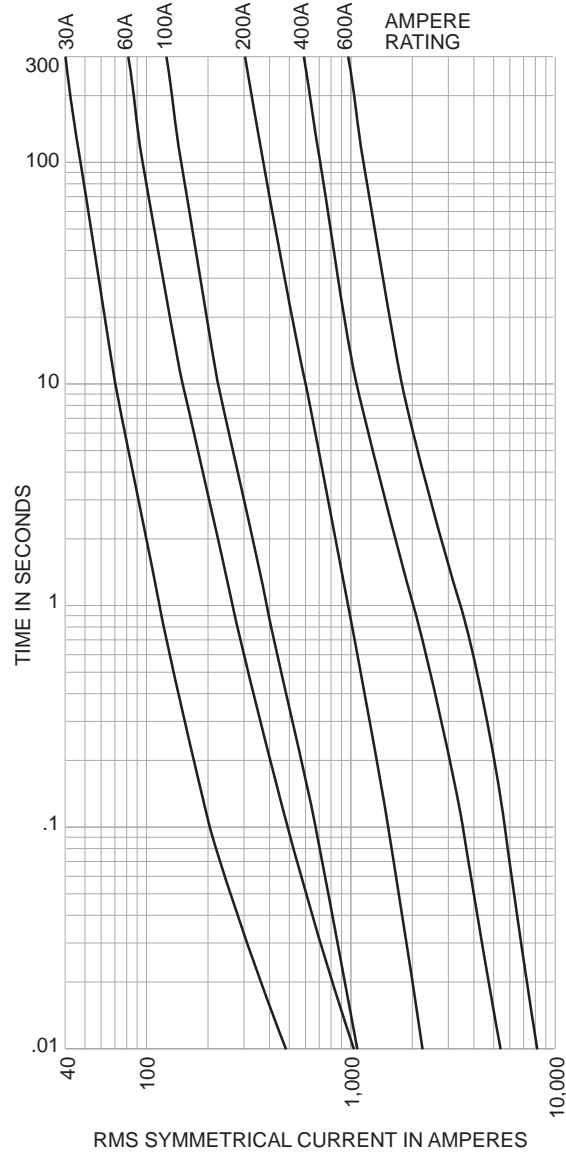
Limitron®
Fast-Acting Fuses
600 Volt

KTS-R
1-600A

Current-Limitation Curves



Time-Current Characteristic Curves—Average Melt



Class R (600V) Catalog Data
(Clip Retaining Spring Standard, Suffix "R")

| Amps | Poles | Basic Catalog Number | Terminal Type (Suffix No.) | | | | |
|------------|-------|----------------------|----------------------------|-------------|------------|--------------|--------------------|
| | | | Screw w/ | | Box Lug w/ | | |
| | | | — | Pres. Plate | — | Clip CU only | 1/4" Quick Connect |
| 1/10 to 30 | 1 | R60030-1 | SR | PR | CR | COR | — |
| | 2 | R60030-2 | SR | PR | CR | COR | — |
| 31 to 60 | 1 | R60060-1 | SR* | PR | CR | COR | — |
| | 2 | R60060-2 | SR* | PR | CR | COR | — |
| 61 to 100 | 3 | R60060-3 | SR* | PR | CR | COR | — |
| | 1 | R60100-1 | — | — | CR | COR | — |
| 101 to 200 | 2 | R60100-2 | — | — | CR | COR | — |
| | 3 | R60100-3 | — | — | CR | COR | — |
| 201 to 400 | 1 | R60200-1 | — | — | CR | COR | — |
| | 3 | R60200-3 | — | — | CR | — | — |
| 401 to 600 | 1 | R60400-1 | — | — | CR* | COR* | — |
| | 3 | R60400-3 | — | — | CR | — | — |
| | 1 | R60600-1 | — | — | CR | — | — |
| | 3 | R60600-3 | — | — | CR | — | — |

*UL Recognized, No CSA Certification.

This bulletin is intended to clearly present comprehensive product data and provide technical information that will help the end user with design applications. Bussmann reserves the right, without notice, to change design or construction of any products and to discontinue or limit distribution of any products. Bussmann also reserves the right to change or update, without notice, any technical information contained in this bulletin. Once a product has been selected, it should be tested by the user in all possible applications.