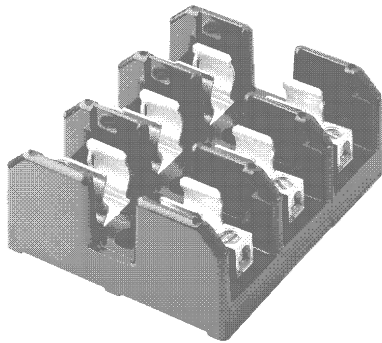


Class J Fuseblocks

600 Volt, 1/2-600 Amps

J600 Series



Standard J Fuseblocks (600V) Catalog Data

Catalog Numbers							
Amps	Poles	Screw†	Pressure Plate†	Box Lug	Box Lug w/ Retaining Clip	Fig. No.	Max. Wire Size
1/2-30	1	J60030-1S†	J60030-1P†	J60030-1C	J60030-1CR††	1	S.P. #10Cu; C #2Cu-Al
	2	J60030-2S	J60030-2P†	J60030-2C	J60030-2CR††	2	
	3	J60030-3S	J60030-3P†	J60030-3C	J60030-3CR††	3	
31-60	1	—	—	J60060-1C	J60060-1CR††	1	#2Cu Al
	2	—	—	J60060-2C	J60060-2CR††	2	
	3	—	—	J60060-3C	J60060-3CR††	3	
61-100	3	—	—	—	J60100-3CR††	4	1/0 Cu-Al
101-200	1	—	—	—	J60200-1CR	5	250MCM Cu-Al
201-400	1	—	—	—	J60400-1CR	6	500MCM Cu-Al
401-600	1	—	—	—	J60600-1CR	7	(2) 500MCM Cu-Al

CATALOG SYMBOL: J6 SERIES
 1/2-600 AMPERES; 600 VOLTS AC
 U.L. LISTED (GUIDE # IZLT, FILE # E14853)
 CSA (CLASS 6225-01; FILE 47235)

† Clip reinforcing springs are standard on fuseblocks rated 100A and above. Available on 30A and 60A blocks by adding the letter "R" to the end of the part number.
 ††Copper only connections available by changing "CR" suffix to "COR".

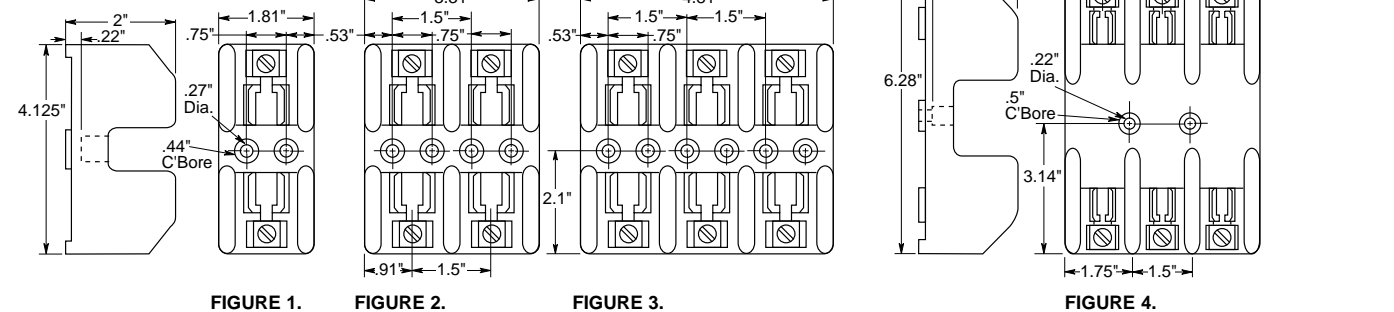
WITHSTAND RATING:
 200,000 RMS SYM. AMPS

For use with Class J Fuses
 (Bussmann LPJ, JKS)

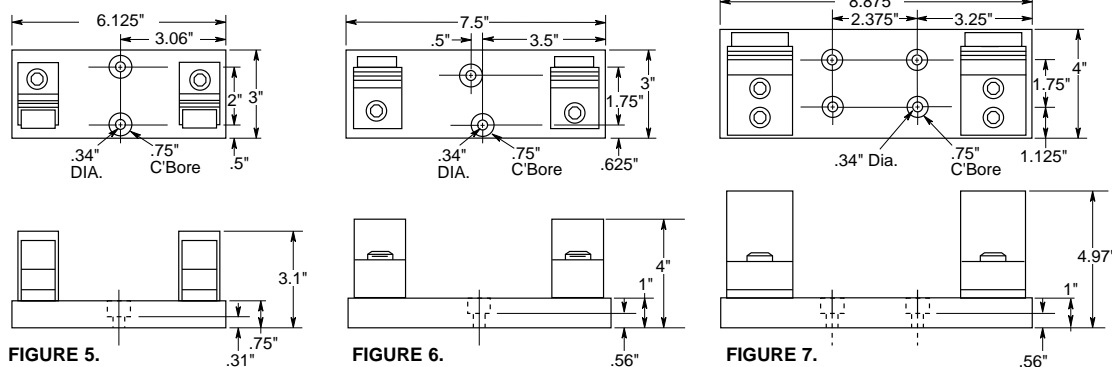
Materials: Thermoplastic
 UL Flammability: 94 VO

Dimensional Data

1/2 to 60A



101 to 600A



This bulletin is intended to clearly present comprehensive product data and provide technical information that will help the end user with design applications. Bussmann reserves the right, without notice, to change design or construction of any products and to discontinue or limit distribution of any products. Bussmann also reserves the right to change or update, without notice, any technical information contained in this bulletin. Once a product has been selected, it should be tested by the user in all possible applications.